
MPS-6 Music Playback System

USER MANUAL

PLAYBACK
DESIGNS



EDELWEISS SERIES

IMPORTANT SAFETY INSTRUCTIONS

- Read and follow these instructions and keep this manual in a safe place.
- Do not use this apparatus near water.
- Do not block any ventilation openings.
- Do not install near any heat sources such as radiators, heaters, or other apparatus (including pre-amplifiers and amplifiers) that produce heat.
- Do not install this apparatus in a confined space such as book cases or closed cabinets.
- Unplug this apparatus from the mains during lightning storms or when unused for long periods of time.

CAUTION

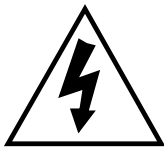
This product is a Class 1 laser product.



There is no hazardous invisible laser radiation during normal operation, because invisible laser radiation emitted inside this product is completely confined in the protective housings. Use of controls or adjustments or performance of procedures other than those specified herein may result in hazardous radiation exposure. The use of optical instruments with this product will increase eye hazard.



CAUTION: TO REDUCE THE RISK OF ELECTRIC SHOCK, DO NOT REMOVE COVER. NO USER SERVICEABLE PARTS INSIDE. REFER SERVICING TO QUALIFIED SERVICE PERSONNEL.



The lightning flash with arrowhead symbol within an equilateral triangle is intended to alert the user to the presence of uninsulated “dangerous voltage” within the product’s enclosure that may be of sufficient magnitude to constitute a risk of electric shock to persons.



The exclamation point within an equilateral triangle is intended to alert the user to the presence of important operating and maintenance (servicing) instructions in the literature accompanying the appliance.

INFORMATION TO THE USER

Alteration or modification carried out without appropriate approval may invalidate the user’s right to operate the equipment.

WARRANTY

Playback Designs warrants the MPS-6 product against defects in material and workmanship under normal use and service for a period of time specified by the product's serial number from the date of first delivery to the owner. The warranty time period is for 30 days. If within the first 30 days of ownership you register your Playback Designs product, by sending us a copy of your sales receipt, your name, address, city, state, zip code, phone number, email address and your dealer's store name, we will extend the warranty to 1 year for the drive unit and 2 years for all other parts. This warranty is limited to the original owner.

Playback Designs will pay for return shipping charges (domestically) back to the owner when the product is sent to Playback Designs within the first 30 days after purchase and the fault can be confirmed by Playback Designs. Otherwise, owner will be responsible for all shipping charges to and from Playback Designs. International customers must deal with their local dealer or distributor.

For all warranty claims, a copy of the original invoice must accompany the product. Opening the product or modifying it in any way by the owner, including but not limited to cryogenic treatment, will void any warranty.

Please contact Playback Designs for a RA (Return Authorization) number and shipping instructions before shipping any product to Playback Designs.

Playback Designs products are sold worldwide through authorized dealers with restricted territories. If any Playback Designs product is purchased from non-authorized dealers or from a dealer selling outside his / her authorized territory all warranties will be void.

If you purchased this product from a dealer please take a moment and send us an email to info@playbackdesigns.com so we can register you for the warranty. If this product has been shipped to you directly from Playback Designs you are automatically registered.

BEFORE USING THE PRODUCT

- What is in the box: MPS-6 music playback system
Remote control unit with installed batteries
Power cord (100-120V countries only)
User manual
- Registration: Please take a moment and send us an email to info@playbackdesigns.com so we can register you for the warranty.
- Installation: Before connecting your MPS-6 to the AC mains, make sure you select the correct voltage on the rear panel (100V, 120V or 230-240V).
Operating this machine at the wrong AC voltage will cause serious damage.
Do not place the MPS-6 over an amplifier or any other equipment that generates heat.

As this product may become warm during operation, always leave sufficient space around the MPS-6 for ventilation. Always allow adequate air circulation around the product.

- Types of discs:



CDDA:

- 12cm or 8cm discs
- 16bit / 44.1kHz PCM digital audio



SACD:

- Single layer, dual layer or Hybrid discs
- 12cm or 8cm discs
- DSD digital audio

CD-R/RW discs recorded in Audio CD format and finalized correctly are playable. But depending on the quality of the disc and the recording, some CD-R/RW discs may not be playable. Discs that are not finalized cannot be played.

The following discs cannot be played: DVD, CD-G, Data part of CD-EXTRA, PHOTO CD, CD-ROM, DVD-ROM, Bluray. Trying to play these discs may result in loud noises and may damage your speakers and your hearing.

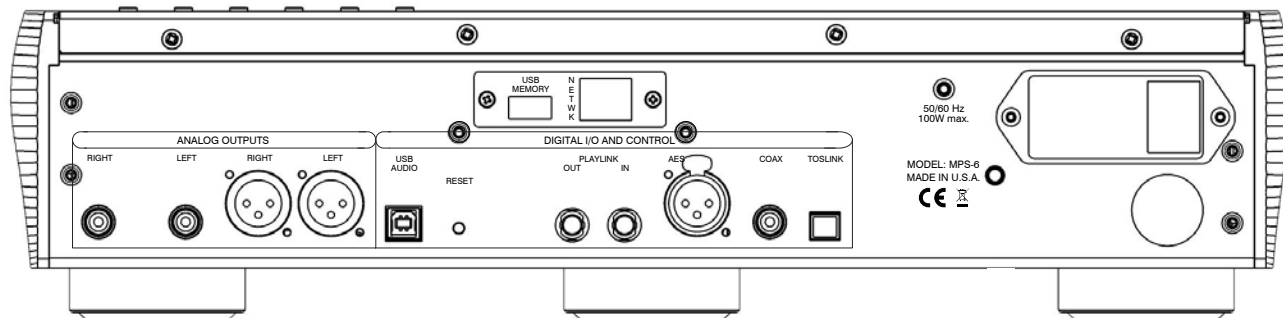
Warning: copy protected discs, DualDiscs and other discs that do not conform to the CD or SACD standard may not play correctly in this player. If you use such discs in this player, Playback Designs cannot be held responsible for any consequences or guarantee the quality of reproduction.

Warning: Never use a stabilizer on the discs as they will damage the mechanism and cause it to malfunction.



Before connecting the MPS-6 to AC power make sure you select the correct voltage for your country on the Voltage Selector switch located on the rear panel.

CONNECTIONS



Digital outputs: **PLINK OUT:** Proprietary optical link to other Playback Designs equipment. This connection supports multiple audio formats natively for PCM and DSD.

Digital inputs:

- AES:** XLR connector for AES/EBU formatted stereo linear PCM data, up to 24bits / 192kHz, and single rate DSD encoded in DoP.
- COAX:** same as AES, but S/PDIF formatted on RCA connector.
- TOSLINK:** same as COAX, but on optical connector, limited to 96kHz max.
- PLINK IN:** Proprietary and high quality optical link to other Playback Designs equipment. This connection supports multiple audio formats natively for PCM and DSD.
Cable specs: ST-ST fiber optic, multimode, 62.5/125µm.

USB AUDIO: Direct USB connection to computers and servers for PCM at sample rates up to 384kHz and DSD up to 11.2MHz.

STREAMER NETWORK: Only available when Stream-X2 option is installed. Input from network sources. See Stream-X2 manual for more details.

STREAMER USB: Only available when Stream-X2 option is installed. Input for USB flash sticks (no HDD supported). See Stream-X2 manual for more details.

Analog outputs: **XLR:** Balanced, pin 2 hot, 4.1Vrms @ 1kHz full level sine wave and output level set to 0db fixed.

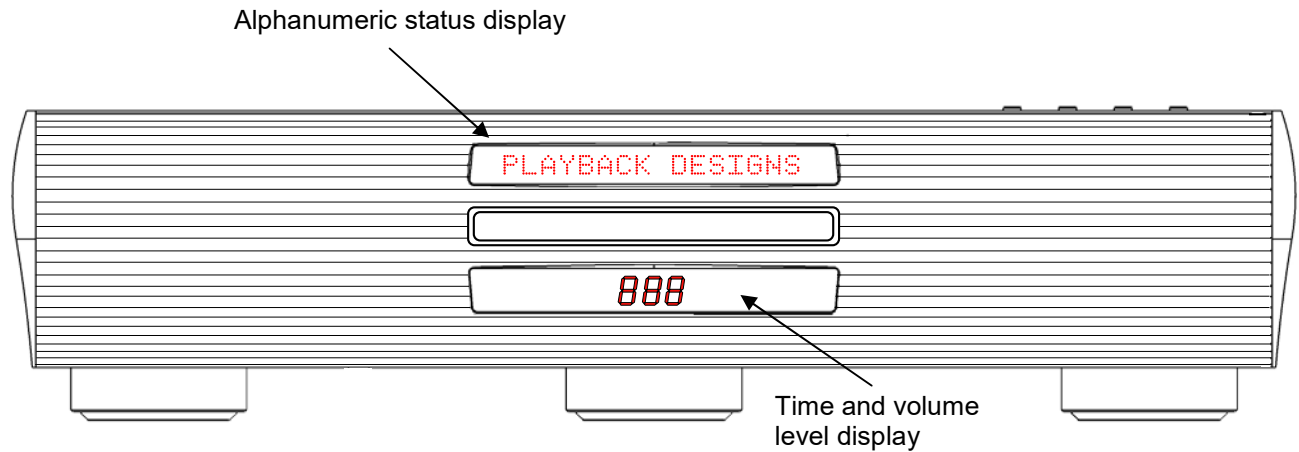
RCA: Unbalanced, 4.1Vrms @ 1kHz full level sine wave and output level set to 0db fixed.

System Control: **RESET:** Used in connection with the software update procedure. When pressed during normal operation it resets the MPS-6, similar to a power cycle.

Power: Before connecting the MPS-6 to the AC mains, please make sure you select the correct voltage for your country on the Voltage Selector switch located on the rear panel. Operating the MPS-6 at the wrong voltage will damage the unit.

NOTE: you should always switch power to standby first before turning off the main power switch on the back.

FRONT PANEL FUNCTIONS












- Buttons:
- ▲ Open / Close tray.
 - ▶ / || Play / Pause toggle, can also be used to close the tray and immediately start playback.
 - Stop playback from disc.
 - ◀◀ Previous track.
 - ▶▶ Next track.
 - ⏻ Standby power on / off.

CONTROL OF ANALOG OUTPUT LEVELS

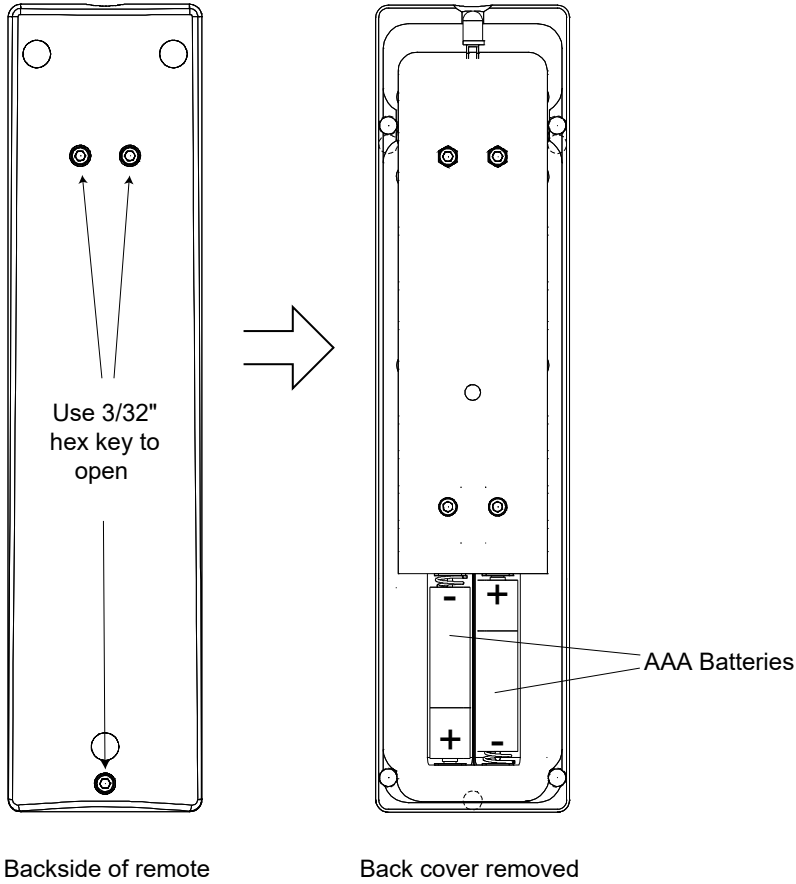
The MPS-6 is equipped with a very high quality analog volume control that is controlled from the remote. If this analog volume control is not desired it can be bypassed in the settings menu. In addition the output level in bypassed mode can be selected between 5 values to optimally match it with your other equipment (see settings and specification chapter for more details).

REMOTE CONTROL UNIT



-  Opens the settings menu on front panel. Press the DISC button first to select the MPS-8 settings.
-  During normal operation these up and down arrows directly below the DISC button toggle through the active inputs of the MPS-8.
-  During settings display these buttons toggle through the settings menu.
-  Open / close tray.
- PHSE Inverts the phase on both analog outputs.
- DIM Dims the display on front panel.
-  If these buttons are pressed for less than 1 second they allow you to jump tracks in sequential order. If during normal playback they are held for more than 1 second the player enters Scan Mode and fast forwards or fast reverses while the button is being pressed.
-  Stops the transport.
-  Starts playback. Can also be used to close the tray and immediately start playback.
-  Pauses playback. Press the play button to continue playback.
- LAYR This toggles the layer selection for SACD discs. In order to change the layer the player must be stopped. The first time this button is pressed the current layer is displayed. Each subsequent press of the button will pre-select another layer. If then the button is not pressed for more than one second the player will switch to the chosen layer if available. This has no effect for CD's.
- TIME This toggles the time display during playback between two states:
 - Elapsed time
 - Remaining time on active track
 The first time this button is pressed it will indicate the currently selected state without changing it. If during the next 5 seconds the button is pressed again it will toggle to the next state.
-  This toggles through two Repeat modes: Repeat currently playing track or Repeat entire disc.
- Numeric buttons:**
Pressing any numeric button with a single digit will locate the transport to the beginning of the chosen track and start playback. The +10 button can be used to access tracks higher than 9. For instance, track 23 can be accessed by pressing: +10 and +10 again and then 3.
- MUTE Mutes all analog outputs.
- VOL +/- Analog output volume control. Need to enable variable output level (see settings menu).

CHANGING BATTERIES ON REMOTE

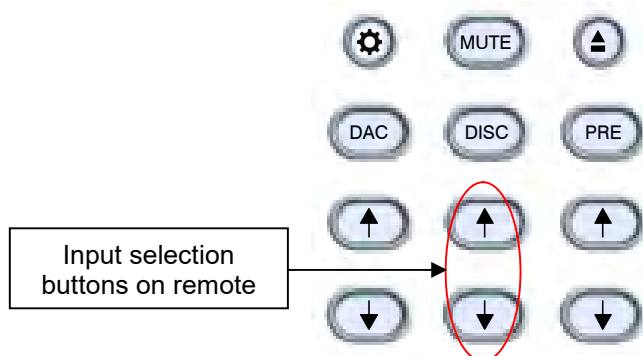


The remote operates with 2 AAA size batteries. In order to change them the back cover needs to be removed as shown in picture on the left. Make sure that replacement batteries are inserted with their polarities as indicated in the picture. The screws can be opened with a 3/32 inch key.

SETTING UP AND SELECTING DIGITAL INPUTS

For selecting digital inputs the IR remote provides buttons with up and down arrows right below the DISC button. With these buttons you can select any of the seven digital inputs on the MPS-6 by toggling up and down through the list.

You can drastically shorten the list of selectable digital inputs by deactivating those that you don't use (see setup menu for further details). For instance, if you only use the USB and AES inputs you can deactivate all others and then use either the up or down arrow button below the DISC button on your remote to switch back and forth between USB and AES input.



CONNECTING THE MPS-6 TO A WINDOWS, MAC OR LINUX BASED PC

Supported resolutions:	PCM: all sample rates up to 384kHz and word lengths up to 24 bits. DSD: native up to 11.2MHz and DoP up to 5.6MHz
Connection protocol and method:	USB 2.0 / Audio class 2.0 compliant, asynchronous mode where the MPS-6 generates a high precision clock master and computer is clock slaved.
PC requirements:	Windows 7 or later, ASIO compatible player software such as JRiver etc.
Mac requirements:	OS X (10.6.6 or later)
Linux computer requirements:	Any Linux version with kernel-integrated USB driver (not ALSA).

In order for your computer to communicate with the MPS-6 and to exchange audio data a custom driver software needs to be installed before you can connect it to the MPS-6. If your computer is a Mac running OSX 10.6.6 or later or you are using a Linux computer you don't need any driver software. DSD file playback is supported on Mac via the DoP standard, and on Linux computers natively up to DSD4x. A driver has to be installed on all Windows based PCs for any kind of audio playback via the MPS-6.

Driver software installation and first time connection on Windows based computers:

1. Download the latest USB driver from the support section on our website: www.playbackdesigns.com
2. Double click on the installer and follow instructions on your screen.
3. Power on the MPS-6 and connect the included USB cable between the USB AUDIO connector on your MPS-6 and your computer.
4. Select USB Input on your MPS-6.
5. The computer will take a moment to enumerate the MPS-6 on its USB bus and notify you when it is installed successfully. You can check successful driver installation and connection in the device manager, where the driver will show up as AKDesign USB Audio under the Sound, Video and Game Controllers tab. It will not be listed in the Sound Control panel.
6. Configure your player software to send audio data to the ASIO interface. Depending on your player software this may be identified as "AKDesign USB ASIO" or simply as "ASIO". Some players may need a plug-in for ASIO compatible playback.
7. For best performance and bit perfect reproduction make sure to set all volume controls in the computer playback software to exactly 0db (wide open), turn off all effects or equalizer that might be running in your playback software. Control the volume only with your analog pre-amp.



Connecting Apple or Linux computers:

No driver needs to be installed. If you are planning to play DSD files on a Mac make sure your playback software sends them via DoP to the MPS-6. Linux supports DSD playback natively without DoP.

During playback with PC

When changing songs from within your player software running on your computer, the USB protocol automatically communicates all necessary sample rate changes to the MPS-6. The front panel of the MPS-6 always indicates the true sample rate during file playback. This system will never perform any sample rate conversion or any signal processing that could adversely affect the sonic performance, but rather use the exact bits from your file and convert them directly to analog.

During playback with Mac

The native OSX operating system and iTunes do not understand the needs of audiophile consumers and insist on sample rate conversion. When connecting the MPS-6 OSX will automatically select the highest possible sample rate (384kHz) and convert all your songs to this rate before playing them out through USB. This will result in degraded performance. You can manually select the sample rate in the Audio/MIDI Setup utility to correspond with the native sample rate of the song, but this can be a tedious process if your library contains songs with more than 1 sample rate. Alternatively, 3rd party plug-ins for iTunes exist that automate this process and always select the correct sample rate for bit perfect playback.

Playback of DSD files

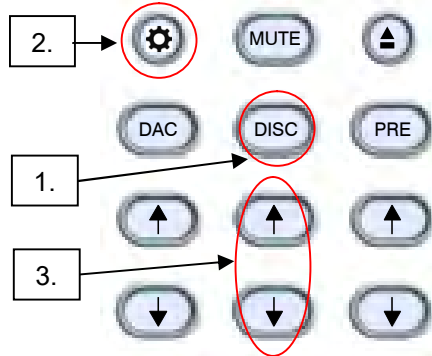
The driver software and MPS-6 hardware are designed to support playback of DSD files at sample rates up to 11.2MHz. You will need a playback software running on your computer that can read DSD files and play them to the USB driver. On the Mac platform you will have to use a playback software that supports the DoP standard for playing DSD files.

General notes

1. For best performance and bit perfect reproduction make sure to set all volume controls in the playback software, control panel to exactly 0db (wide open), turn off all operating system sounds, effects or equalizer that might be running in your playback software or Windows / OSX. . Control the volume only with your analog pre-amp or the internal analog volume inside the MPS-6.
2. While the MPS-6 has no problem supporting playback via USB while it is switched to a different input (i.e. disc playback, AES or Coax input) it is a good idea to stop playback on your computer before selecting another input. The clock management in the MPS-6 may not provide the correct frequency to the USB port if it is not selected. The computer software may have a problem with that and may malfunction. So when not listening to the USB input, stop playback on your computer.

SETUP MENU

The MPS-6 has several options that can be displayed and set via remote control. By pressing the DISC button on the remote first and then the SETTINGS button within 5 seconds the top display starts to flash while displaying the first item in the setup menu. Use the arrow buttons to go to the next setting.



To change any settings in the menu the PLAY button can be pressed. Once you have programmed all settings you can exit the menu by pressing the SETTINGS button again.

The following options are available in sequence:

1. List of 7 individual digital inputs: each input can be turned off so it no longer is available in the selection during normal operation. For instance, if you only use two inputs you can turn off all others. You can then switch between your two inputs with the arrow buttons on the remote.
2. Serial number of your MPS-6. This option is not user programmable.
3. Firmware version. This option is not user programmable.
4. OUT LVL; the analog output level can be set as variable, therefore enabling volume control via remote control, or fixed in the following values: -6db, -3db, 0db, +3db, +6db. 0db yields about 3.4Vrms with a 1kHz full level sine wave.
5. PLINK OUT: if you want to connect your MPS-6 to a classic Playback Designs DAC (such as MPS-5) you need to select the "Classic" format. All other products use the "Sonoma" format.
6. PLINK IN: if you want to connect a classic Playback Designs source (such as MPS-5) you need to select the "Classic" format. All other products use the "Sonoma" format.
7. IR LOCK: with IR control there is always a chance for conflicts where 2 different machines use the same codes. This feature allows you to disable the IR commands for the MPS-6.
8. HOURS: this indicates how many hours your MPS-6 has been operating during its life.

EXTERNAL CLOCK

A unique feature of the MPS-6 is its elaborate and sophisticated clock generator which does not require to be locked to an external source. With various stages of buffering and unique control algorithms it completely shields its sensitive internal clock circuitry from the negative effects that any incoming digital audio stream can have on the clock generator. This removes any incoming jitter from external sources so well that no complicated setup with master – slave clocking configurations are needed, as is often the case with other equipment. In fact, the MPS-6 performs equally well with jittery sources as with higher quality ones. For this reason the MPS-6 does not require an external clock nor does it require to be set up as a clock master.

BREAKING IN THE MPS-6

Breaking in the MPS-6 is time consuming but well worth the effort. It would be a mistake to pre-judge the performance based on what you might hear at first listen. This is what you can expect to hear at different intervals during break-in:

1. Out of the box: The MPS-6 will have good clarity, but the highs can be recessed. Bass might appear to be a bit muddy and lacking punch. Soundstage might sound closed in.
2. 50 - 150 Hours: The sound will open up a little bit, but can still sound a bit brittle.
3. 150 - 350 Hours: Midrange will start smoothing out and clarity will increase, but highs might continue to remain recessed. At this point, there probably will not be much change in the bass. You will probably wonder how the Playback Designs converter will ever sound like others have described, but we assure you that you will start to hear substantial changes within another week of play.
4. 350 - 500 Hours: The magic will be starting. Highs will be open and airy. Midrange will appear much more full bodied and natural. Soundstage will be huge and the image presentation will start appearing very holographic. Bass will be incredibly deep and tight with texture and detail galore.
5. Over 500 Hours: The MPS-6 will continue to change subtly over the upcoming month of usage, but you should be recognizing a very life-like and natural sound.

During break-in when you do not listen to music it is best to feed an external digital audio signal into any of the digital inputs of the MPS-6.

SPECIFICATIONS

<p>Power Supply Selectable.....AC 100V-240V, 50-60Hz Consumption..... 100W max.</p>	<p>Analog Audio Outputs XLR, RCA @1kHz full level: Fixed settings: -6db: 1.7V rms -3db: 2.4V rms 0db: 3.4V rms +3db: 4.8V rms +6db: 6.8V rms Variable setting: 14.3V rms max.</p>
<p>Weight.....11 kg / 24 lb</p>	<p>Output impedance..... 56 Ω</p>
<p>Ext. dimensions (W x H x D) 44 x 11 x 43 cm 17.3 x 4.3 x 16.9 inches</p>	<p>Operating Temperature.....+5°C to +30°C</p>
<p>Batteries for remote control unit.....2x AAA</p>	<p>Mains fuse: 1.6A / 250V slow blow, 20mm</p>

CHANGING THE FUSE ON THE MPS-6

Inside the power connector on the rear panel of the MPS-6 are two fuses that protect the machine from dangerous power surges. If the machine fails to power up or no light on the front panel is lit after pressing the standby power button on the front panel then proceed as follows to change the fuses:

1. Locate fuse compartment on power connector on rear panel:



Prying open with small screw driver

Fuse compartment

2. Use a small flat screw driver to pry open the fuse compartment as shown in above picture.
3. Pull fuse compartment out and flip sideways as shown below:



4. Replace both fuses with 1.6A / 250V slow blow types. Length is 20mm

CLEANING THE CHASSIS OF THE MPS-6

It is possible that the chassis can stain slightly from finger prints or you may discover subtle stains on the surface after some use. You can easily clean the chassis with a window cleaning solution and a clean and soft cloth. The best way is with a micro fiber cloth.

UPGRADING THE FIRMWARE IN YOUR MPS-6

Playback Designs is constantly innovating new algorithms and methods for audio processing and from time to time may release new firmware for the MPS-6 that may further enhance the sonic performance or add new features. New releases will be distributed as audio wave files. They can be played into the MPS-6 via its USB input just like any other audio file. The MPS-6 processor will automatically detect this file and update the firmware. No audio will be audible as the processor will automatically mute the outputs. The MPS-6 contains 2 processors and hence there may be 2 separate files available, one for each processor. It is possible to display the version of the currently installed software (see Setup Menu).

Upgrade Procedure:

1. Power on MPS-6.
2. Connect your computer with a USB cable to the USB AUDIO input on the rear panel.
3. Load the wave file with the update firmware into your player software on your computer. As iTunes on Mac computers is not a bit perfect player you cannot use iTunes for this procedure, but we have confirmed that Audirvana works perfectly on Mac computers. On the Windows platform we have verified Foobar and Roon, but JRiver won't play this file.
4. Play the file.
5. The front panel will indicate WRITING FLASH. It is important that at this point you no longer touch the system, nor your PC, nor the remote, don't change the input, don't turn the power off. Go have a glass of wine, because it will take about 2 minutes for this to finish.
6. Once playback has finished the front panel will return to either normal display or it will say WRITING FAILURE. A failure can happen when you didn't follow the instructions in the previous steps or your PC had a dropout during playback. If this failure happens, don't panic, but follow the next steps precisely:
 - a. DO NOT POWER OFF the MPS-6.
 - b. Disconnect your computer from the MPS-6.
 - c. Push the RESET button on the back panel.
 - d. Re-connect the USB cable.
 - e. Play a normal audio file to make sure everything is still working normally.
 - f. Stop playback and go back to step 3.
7. If playback of the update file has finished and the front panel does not display any error message, but indicates normal operation then stop playback and disconnect the USB cable.
8. Power off the MPS-6.
9. Power on the MPS-6 and check the software version in the setup menu to confirm everything worked okay.

APPENDIX: STREAM-X2 OPTION

Stream-X2 is an option that can be built into the MPS-6 Edelweiss Player. It offers streaming directly from services such as Tidal, Quobuz, Deezer and vTuner. It can also be used to stream from network storage (NAS) or from USB flash stick (no HDD supported) that is directly attached its own USB connector (Streamer USB). It is a DLNA renderer and server and also supports the Roon network protocol. It makes your MPS-6 "Roon ready".

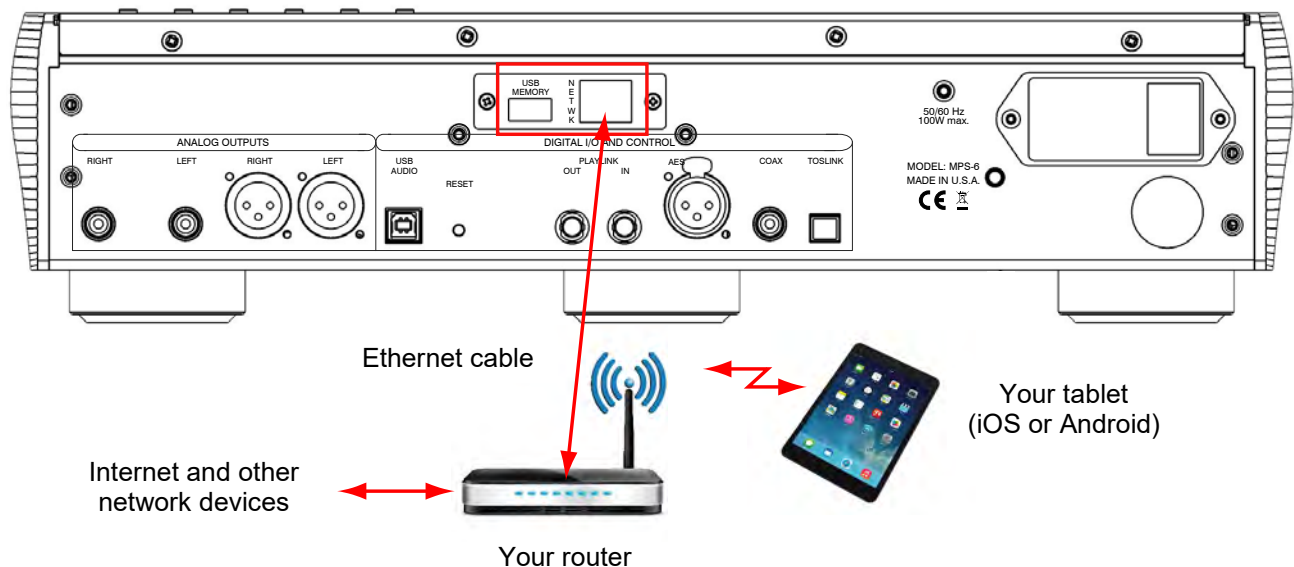
The Stream-X2 option must be installed in the MPS-6 player by either the factory or an authorized dealer. All warranties are void when an end user installs this option.

Supported formats: PCM up to 384kHz in WAVE, WMA, FLAC, AAC, AIFF, Apple Lossless, and MP3 file formats
 DSD up to 11.2MHz in DSF and DFF file formats.
 NOTE: not all DLNA servers support DSD files and depending on your NAS or DLNA server DSD files may not play correctly through Stream-X2.

Supported network protocols: DLNA, UPnP, Roon

Supported streaming services: Tidal, Qobuz, Deezer, vTuner

CONNECTING STREAM-X2 TO YOUR NETWORK



Stream-X2 connections on back panel of MPS-6

Streamer Network: Connect this to your network router and make sure it is connected to the internet and its wireless network is active. The Stream-X2 needs this network connection to connect and play any streaming media from the internet. It also uses it to connect to your tablet for remote control or to your Roon server.

Streamer USB: This is where you can plug in flash sticks (no HDD supported) with music files that Stream-X2 can play. If you want to use this connector often and the back panel of your MPS-6 is not so easy to reach within your rack, you can use a short USB extender cable to bring this connection to the front of the product where it is easier to reach.

PREPARING YOUR TABLET AND CONNECTING IT TO STREAM-X2

Any Apple iPad or Android tablet can be used to control Stream-X2. The Apple iPad Mini is recommended for best ease of use. To use the tablet it is necessary to download and install an app from a 3rd party vendor (ConversDigital). The Stream-X2 uses the DLNA protocol and so most DLNA controllers can connect with Stream-X2. But we have worked with this 3rd party vendor to also include features that are not supported in DLNA and so we recommend strongly to use that 3rd party app by ConversDigital.. The following apps are available depending on tablet and desired features:

1. **mconnect Control HD**: this free app can only be used in landscape orientation. It does not support iPhone. This app gives you all the features that Stream-X2 is capable of and also offers you the most comprehensive user interface with the most important functions are accessible on a single page. This app also incorporates features that are not supported in the standard DLNA protocol, such as firmware update and complete set of features for all streaming services.
2. **mconnect Control**: this free app is functionally the same as mconnect Control HD, but it only runs in portrait mode and is also supported on the iPhone. Since it supports smaller screens of phones it has a layered user interface where various features are in separate pages. This app also incorporates features that are not supported in the standard DLNA protocol, such as firmware update and complete set of features for all streaming services.
3. **mconnect Player**: there is also a Lite version. These are general purpose DLNA apps and are, therefore, not free or come with advertising. They do not support our additional features and only support limited streaming services. While they work fine with Stream-X2 we highly recommend you use either one of the **mconnect Control** apps.

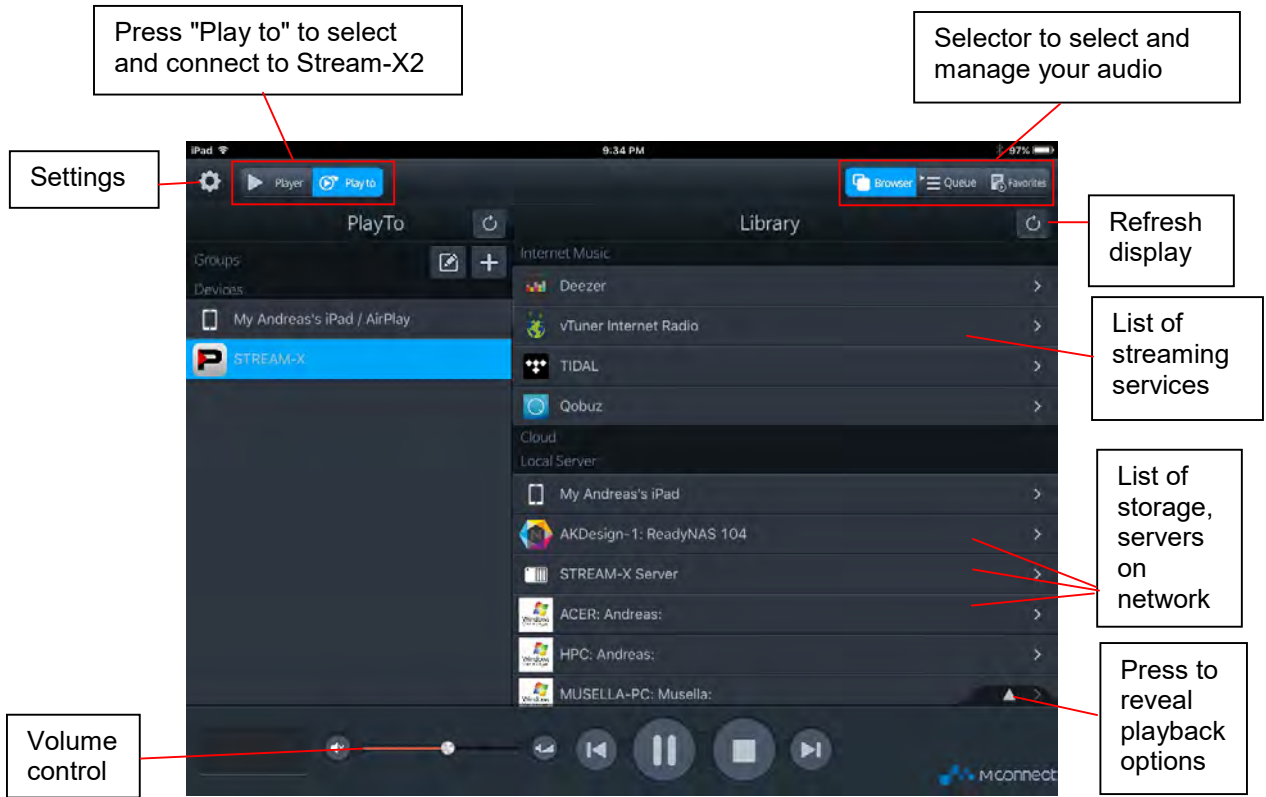
Follow these steps:

1. Connect your tablet or phone to the internet.
2. Launch App Store (iPad) or Play Store (Android) and search for "mconnect Control".
3. Install either "mconnect Control" or "mconnect Control HD".
4. Check that your tablet is connected to the same network as Stream-X2
5. If not done so already, power on your Stream-X2 (select STREAMER input on your MPS-6). After a fresh power up, it may take a few seconds to start. Just wait until the front panel indicates a valid sample rate.

CONTROLLING STREAM-X2

In the following guideline we will use the mconnect Control HD app. Follow these steps:

1. Connect your tablet or phone to the internet and make sure it is on the same network as Stream-X2.
2. Launch App Store (iPad) or Play Store (Android) and search for "mconnect Control".
3. Install either "mconnect Control" or "mconnect Control HD".
4. If not done so already, power on your Stream-X2 (select STREAMER input on your MPS-6). After a fresh power up, it may take a few seconds to start. Just wait until the front panel indicates a valid sample rate.
5. Launch the mconnect Control app. The following screen presents itself:



6. If you launched the app for the first time it is possible that Stream-X2 is not yet connected to the app. Just press the button in top left corner "Play to" and select Stream-X2 from the list that appears below.
7. Once you are connected to the Stream-X2 you can select your music in the Library section on the right side of the screen:
 - Deezer, Tidal and Qobuz are all streaming services with various degrees of audio quality. All 3 offer high resolution streaming. If you select one of those in the list you will be prompted for your account info. If you don't have an account you will have to create one first by going to the corresponding website.
 - vTuner is a collection of free radio stations from around the world.

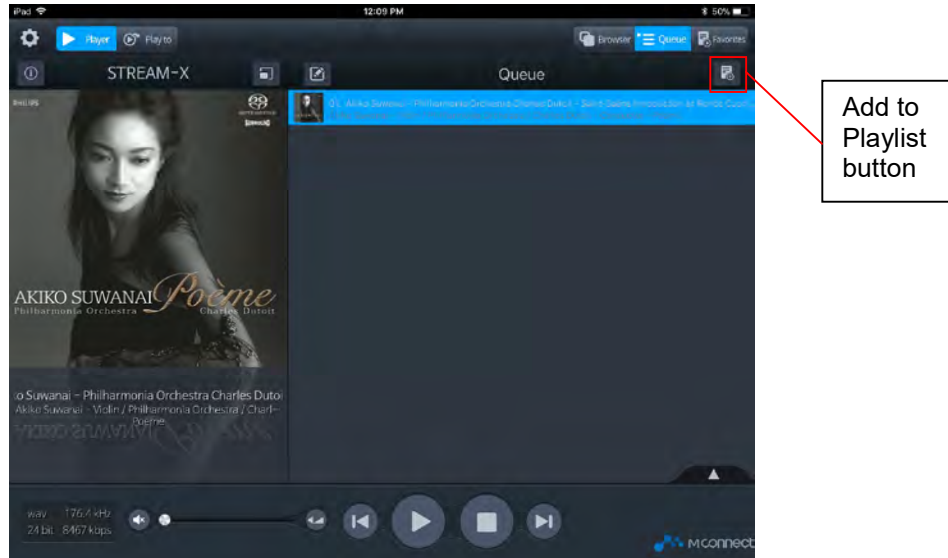
Below the list of streaming services you find a list of computers and storage devices on your network. If you see a line "Playback Stream-X2 Server" as in the above screen shot, it means that there is a USB stick connected directly to the Stream-X2 module (Streamer USB connector on back panel). In this case the Stream-X2 module acts as a server. Tapping on any of these lines will allow you to select any song that this particular storage device contains. In this list you can also see a list of computers and other DLNA or UPnP servers with storage that might contain playable audio files.

The volume button to the left of the transport keys can be used to directly control the analog output volume of the MPS-6 if its volume is enabled (see setup menu of MPS-6).

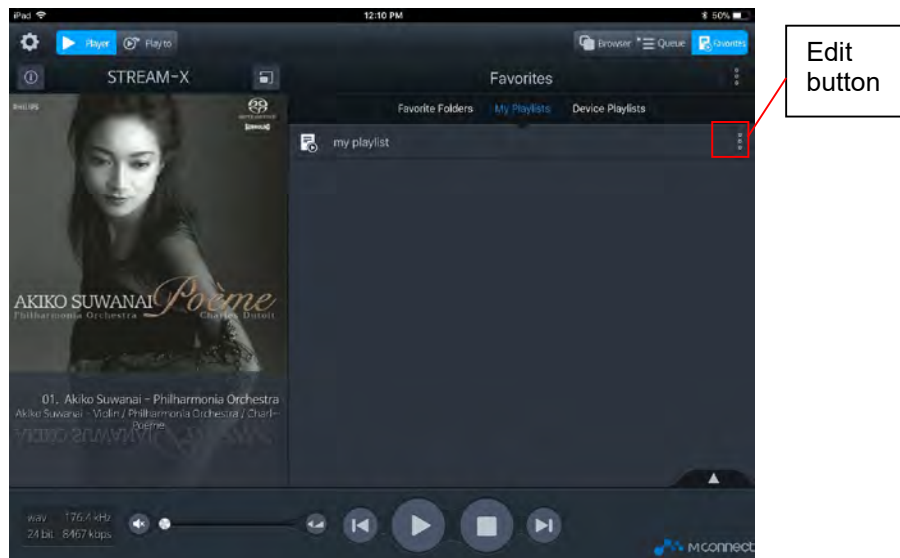
8. In the upper right corner you can select the view between Browser, Queue and Favorites:
 - The browser allows you to browse and select streaming services or files in the list of storage
 - The Queue page shows your current list of music playing and allows you to create playlists.
 - The Favorites page is a list of your favorite music and playlists. Here you can also edit playlists.

CREATING AND EDITING PLAYLISTS

1. Select a song in the browser page. This will automatically take that song to the queue and play it along with any other song that might be in the same album.
2. Switch to the Queue page (press Queue in upper right corner). You will see the following page with the selected songs:



3. Press the "Add to Playlist" button on upper right corner. You will be prompted to select an existing playlist or to create a new one.
4. On the next page you will be able to select the songs in the queue that you want to transfer into the playlist. When done with your selections press the DONE button in upper right corner.
5. Select Favorites view and "My Playlists" under favorites. There you will see your playlist you just created. You can play, rename or delete the playlist by pressing the edit button on the same line of each playlist:



6. Select your playlist from the list and the next page will show you the contents of your playlist.
7. In this page you can edit your playlist by pressing the EDIT button or you can add more tracks by pressing the PLUS button:

